



# You have been arrested - this will tell you what will happen



**medacs**  
HEALTHCARE

5 Boroughs Partnership  
NHS Foundation Trust



GREATER MANCHESTER  
**POLICE**



# The police think you have done something wrong.



The part of the police station you are in is called a custody suite.



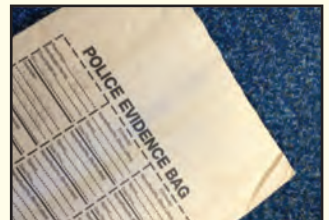


You will have to give your belongings to the police officer. They will be kept safe and given back to you when you leave.

Sometimes the police will need to take the clothes that you are wearing.

If this happens you will be given some clothes to wear.

Sometimes the police need to keep some of your things for evidence. They will tell you if they are going to do this.





The police officer will explain your rights to you.

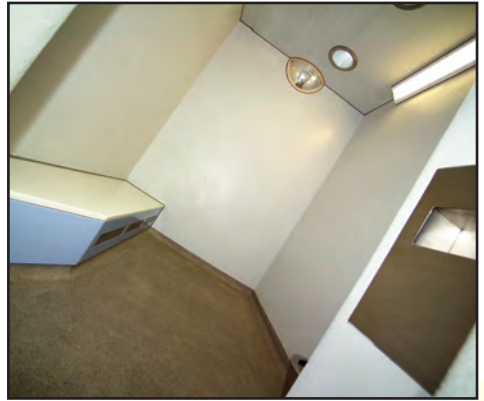
You can ask the police officer to tell someone you are here.

This can be a family member, your partner, a friend or a member of staff who works with you.



The police may ask for a nurse or a doctor to see you.

You can ask to see one if you feel unwell.



You will have to stay in a locked room called a cell.

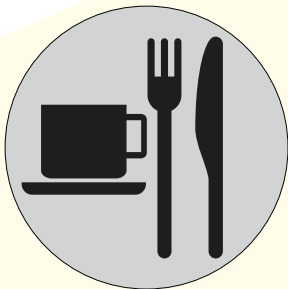
The police officer will keep the key.

You can sit or lie on the bench.

You can use the toilet.

You can press the button if you need help.

There may be a camera in the cell, so the police can check you are OK.



You will be given food and drinks.





The police will take your photograph.

The police will take your fingerprints.

They will put your fingers onto a machine to do this.



The police will take DNA samples from your mouth.

They will use a swab on a stick and rub the inside of your mouth with it.



The police may interview you.

This means asking questions about what has happened.

The police will record what you say on a tape or other type of machine.

The police may also write down what you say.



The police may contact a solicitor for you.

The solicitor will help you with legal information and make sure you are treated fairly.

This will not cost you anything.



You can have an 'Appropriate Adult'.

This can be a friend or family member, someone who works with you or a person who is trained to do this.

The Appropriate Adult may sit with you and help you understand what is being said to you and what is happening.





The Appropriate Adult is there to help you. Tell them or the police if you don't understand or feel scared during the interview.

Tell the police if you need a break from the questions.

You do not have to answer the questions, the solicitor or appropriate adult will explain why.

The police will ask everyone who is in the interview room to sign the interview form.

After the interview, you may have to go back to your cell so the police can decide what will happen next.

# What happens next?

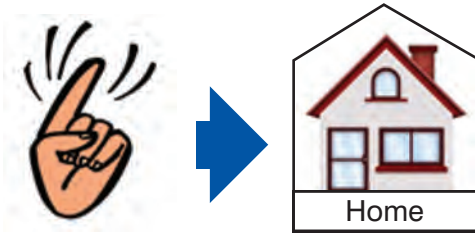
- **No further action will be taken**

This means you can go home.



- **Caution**

If the police decide the offence is small, you will get a warning from the police. You can still go home.



- **Police Bail**

You will be able to go home, but will be given a form, and a date to go back to the police station.



- **Court Bail**

You can go home but will have to go to court on another day. This means you have been charged with a crime.



- **Remand to Court**

You will be charged with the crime. You will have to stay in the cell at the police station until you are taken to court. This is usually the next day.



The police will explain these in more detail. You can ask your solicitor or appropriate adult to help you understand.

They can help you if you ask them to look at this -<https://www.gov.uk/government/publications/notice-of-rights-and-entitlements-easy-read>

This booklet has been developed by  
The Criminal Justice Liaison Team  
5 Boroughs Partnership NHS  
Foundation Trust  
in partnership with Greater Manchester Police.

Service users, police custody staff and a  
speech & language therapist have been  
consulted as part of the development  
of this booklet.

The information in this leaflet was valid at the date  
of production: February 2014.

Images and text kindly supplied by  
Photosymbols, Greater Manchester Police  
and Merseyside Police



5 Boroughs Partnership  
NHS Foundation Trust



GREATER MANCHESTER  
**POLICE**

